



**Meeting the climate challenge:  
Briefing on the Small Island States Resilience  
Initiative (SISRI)**

# SIDS call for assistance

---

## *Small States Forum 2013 – Chairman’s Summing Up:*

- *“We called upon the World Bank to explore how climate change funds can be leveraged more effectively for sustainable development in small states.”*

## *SAMOA Pathway, September 2014 (Article 44)*

- *“We call for support for the efforts of Small Island Developing States:*
  - *To build resilience to the impacts of climate change and to improve their adaptive capacity through the design and implementation of climate change adaptation measures;*
  - *To address remaining gaps in capacity for gaining access to and managing climate change”*

# Small Island States Resilience Initiative

---



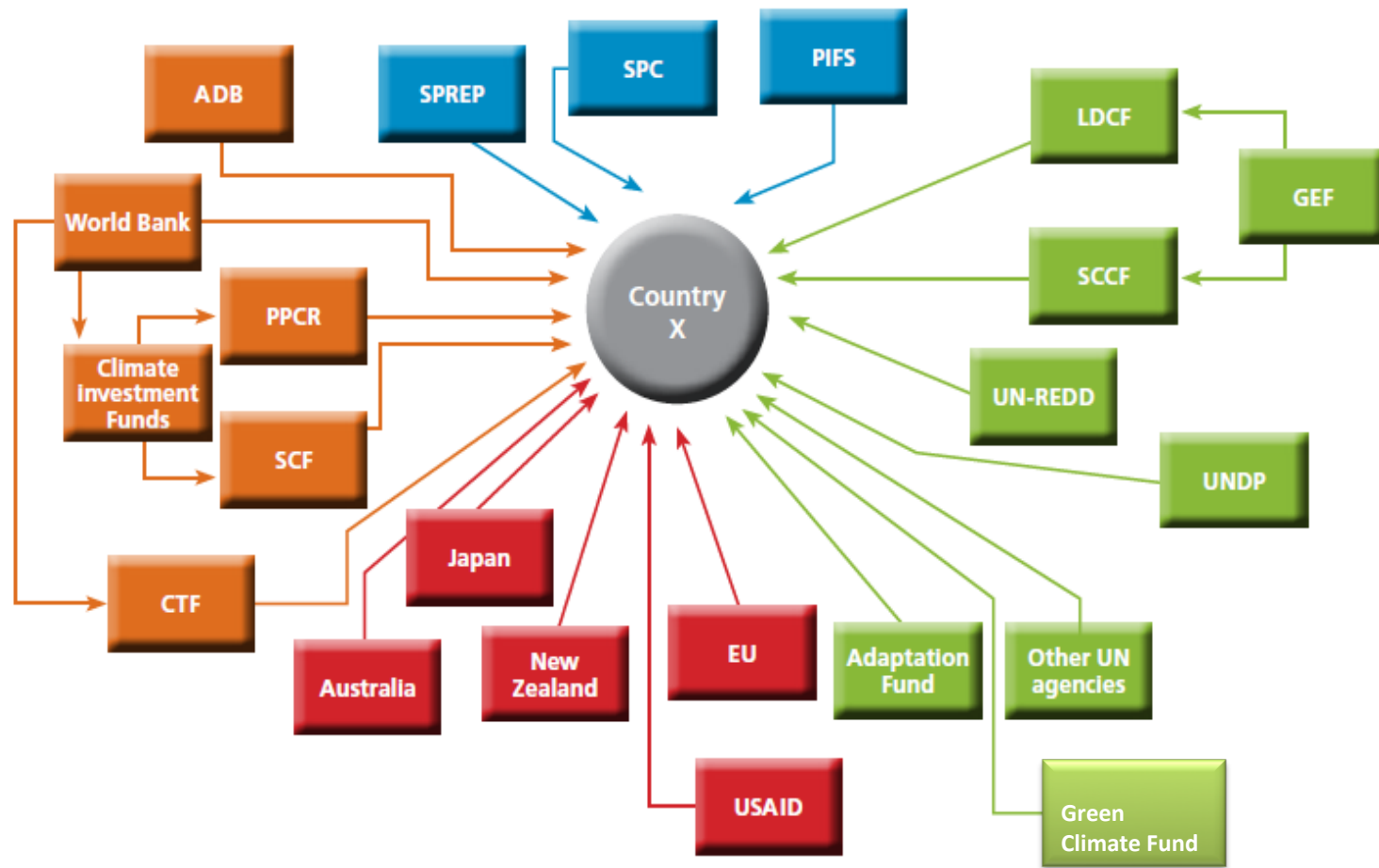
*A global program established in the World Bank in response to calls from small island states.*

*Launched at the **Third UN Conference on SIDS** (October 2014).*

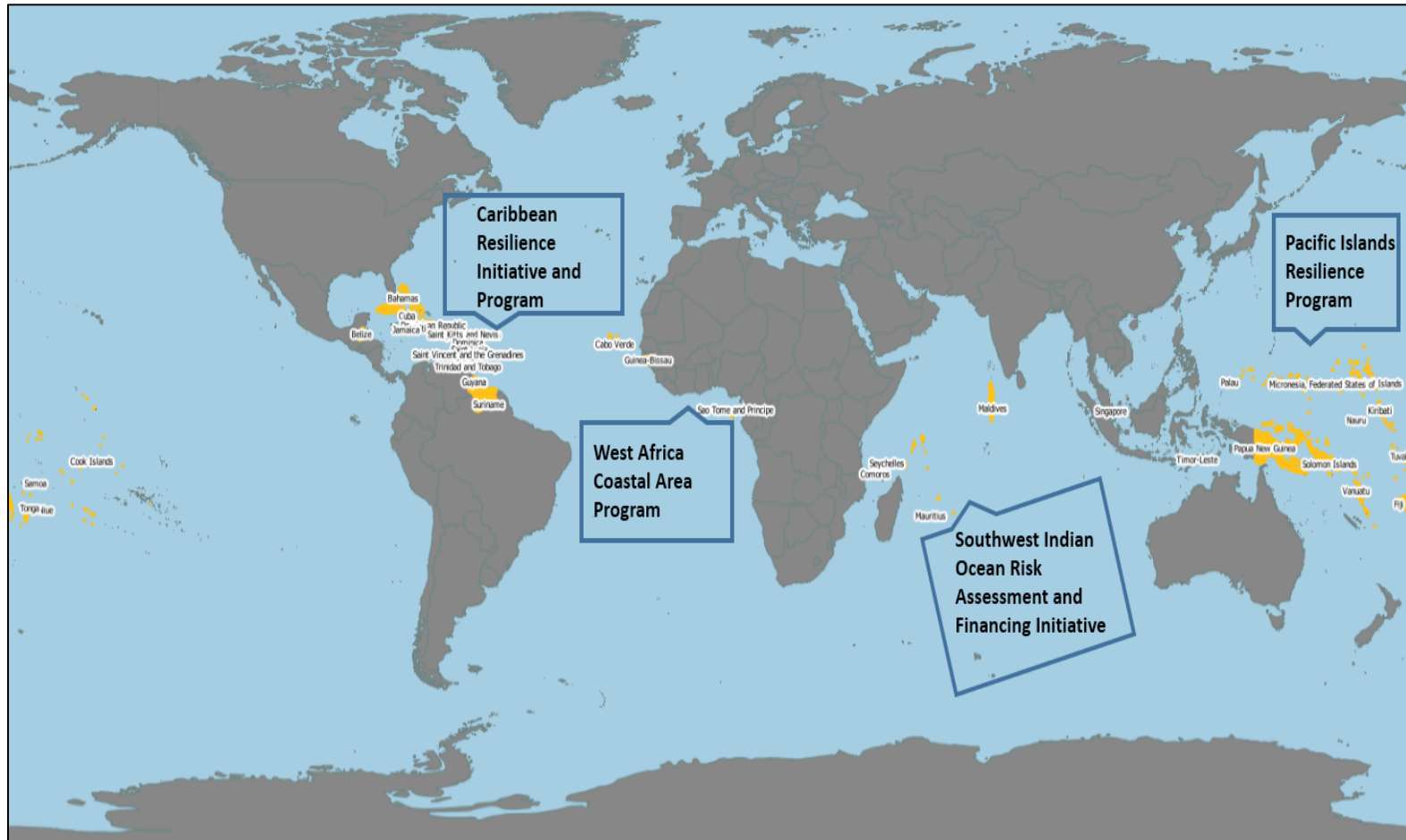
- *Based on analysis and experience*
- *A framework with three building blocks*
- *Established a dedicated team to support Small Island States*
- *Identified a need for practical knowledge sharing amongst practitioners in Small Island States across all regions*
- *Identified need for measuring progress towards enhanced resilience*

# Analysis shows Considerable Financing for Resilience

At least US\$800 million a year but funding is fragmented



# Ongoing Programs of Assistance

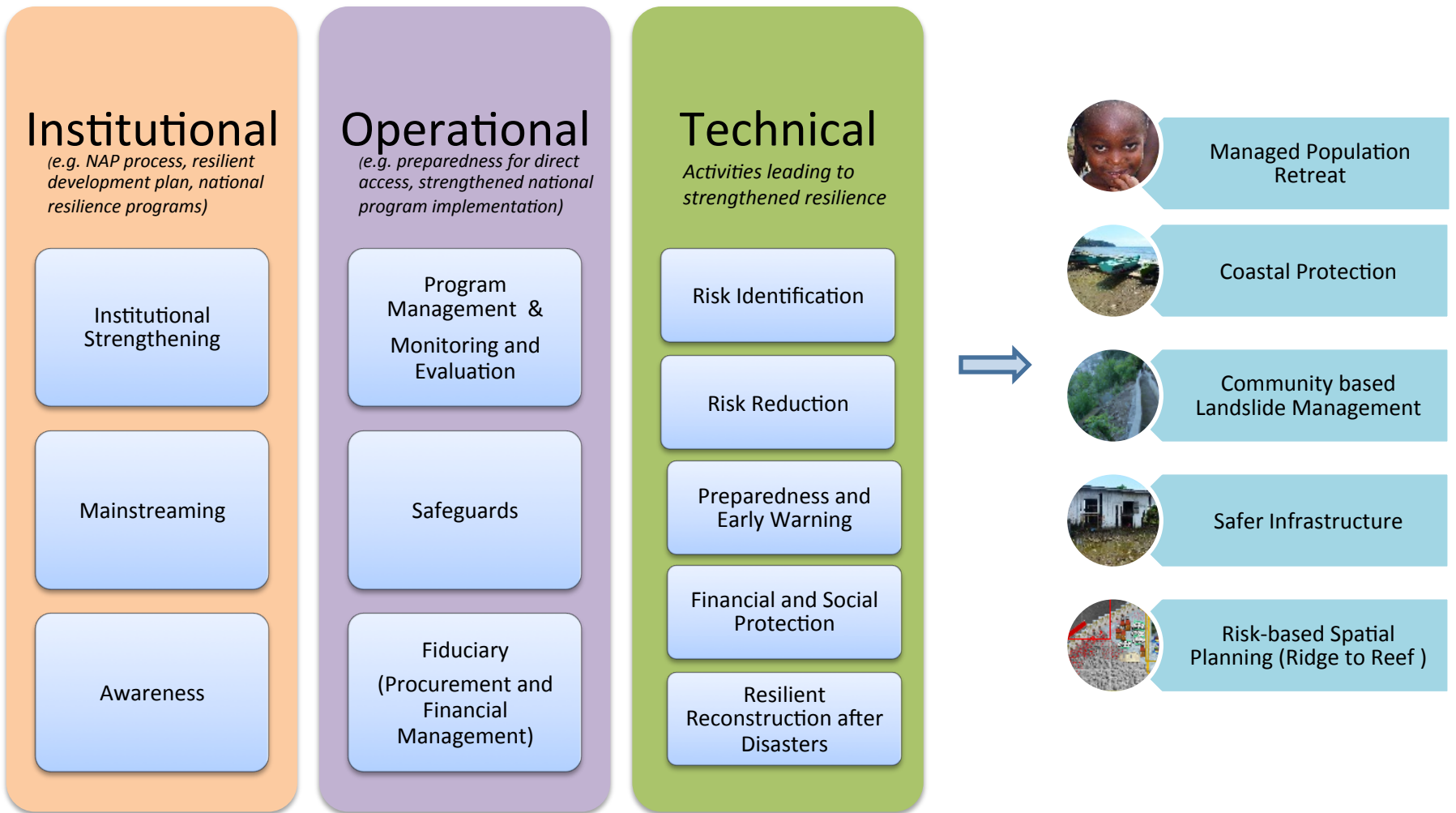


The current World Bank portfolio of climate and disaster resilience assistance to Small Island States is **US\$200 million/year**, commitments in 24 countries.



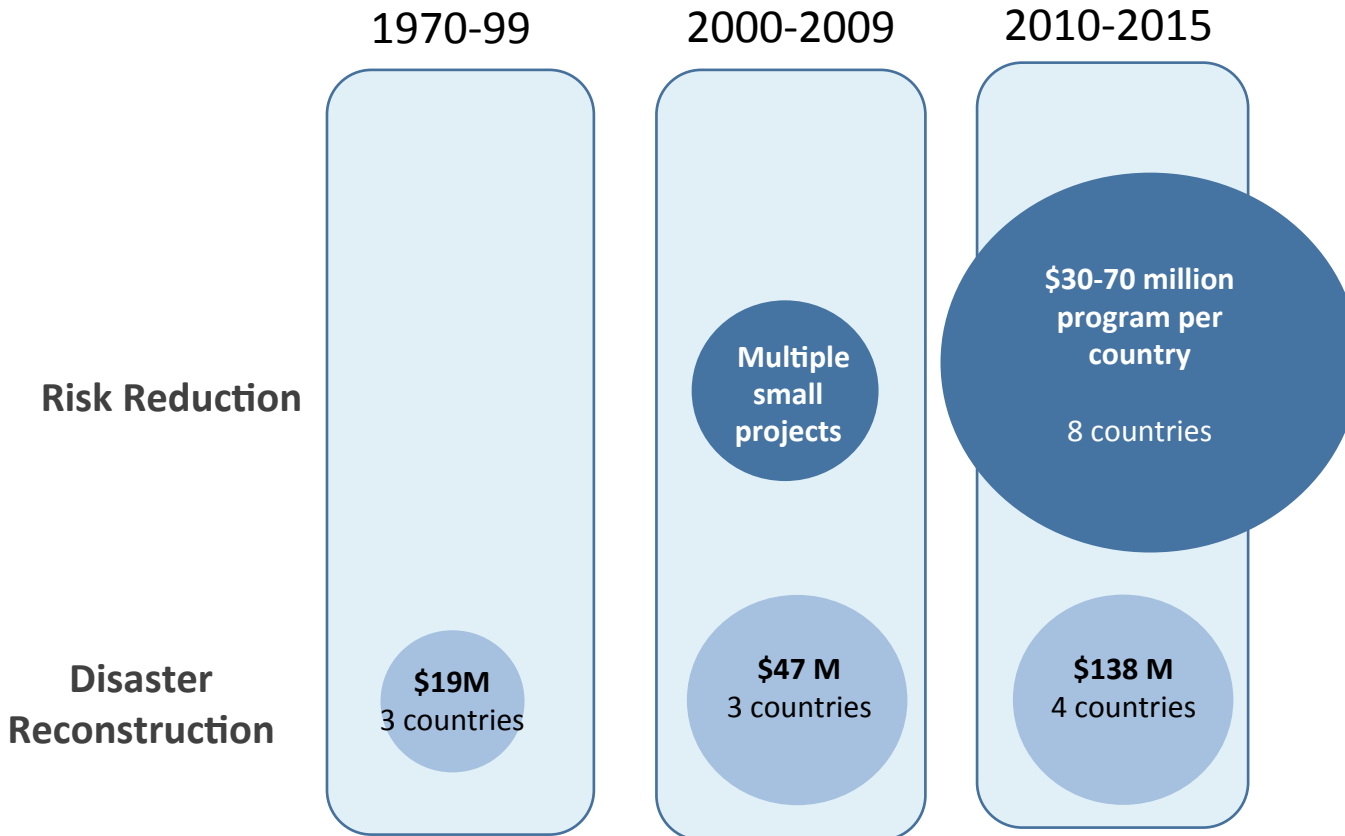
# Framework to Support Effective Implementation

Targeted assistance to address the 'Building Blocks' of resilience



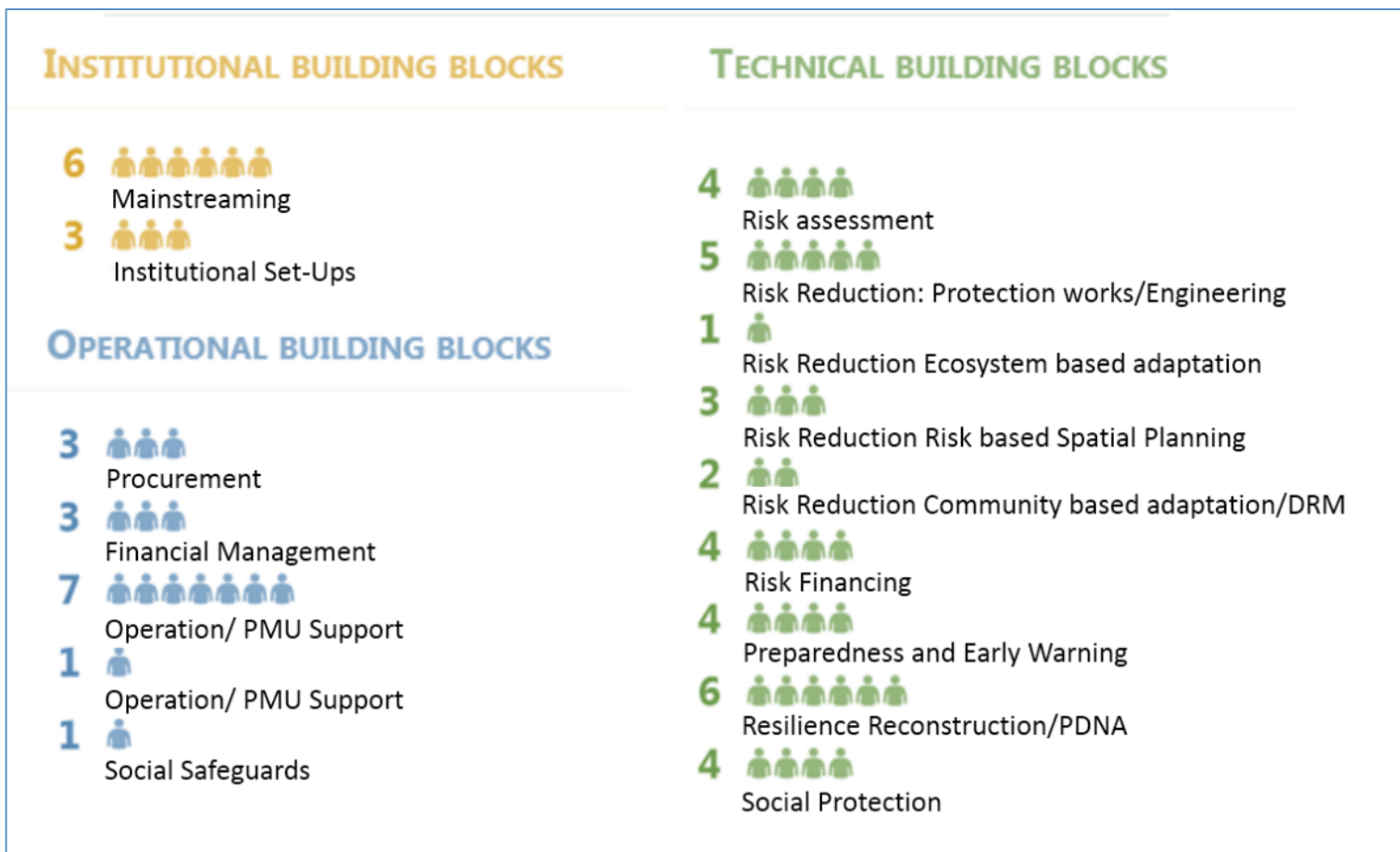
# Consolidating Investments and Capacity: Example of the Caribbean

## Example of the Caribbean



→ By combining sources of financing under a single national program and using a central coordinating agency, countries have been able to vastly increase the amount of resilience funding they manage.

# Dedicated World Bank Team Specialized in Small Island States





# A Global Practitioners Network for Resilience in Small Island States

---



**SISRI Workshop**, 50 practitioners from Ministries of Finance, Planning, Environment and Project Management Units of 20 countries sharing experiences.

# Enhancing Coastal Resilience - combining hard infrastructure and ecosystem based approaches

(St Vincent & Grenadines)

## Boulder Revetment facilitating land reclamation



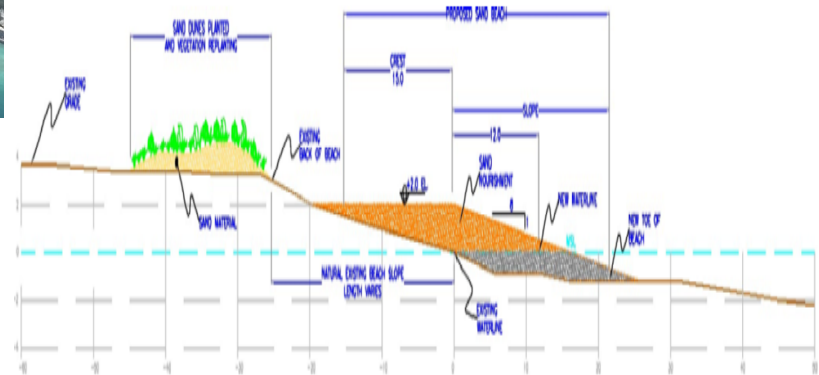
## Submerged Breakwaters



## Artificial Coral Reef



## Sand Replenishment and Dunes



# Reducing Fragmentation – An Integrated and Risk-based Spatial Planning Approach (Samoa)



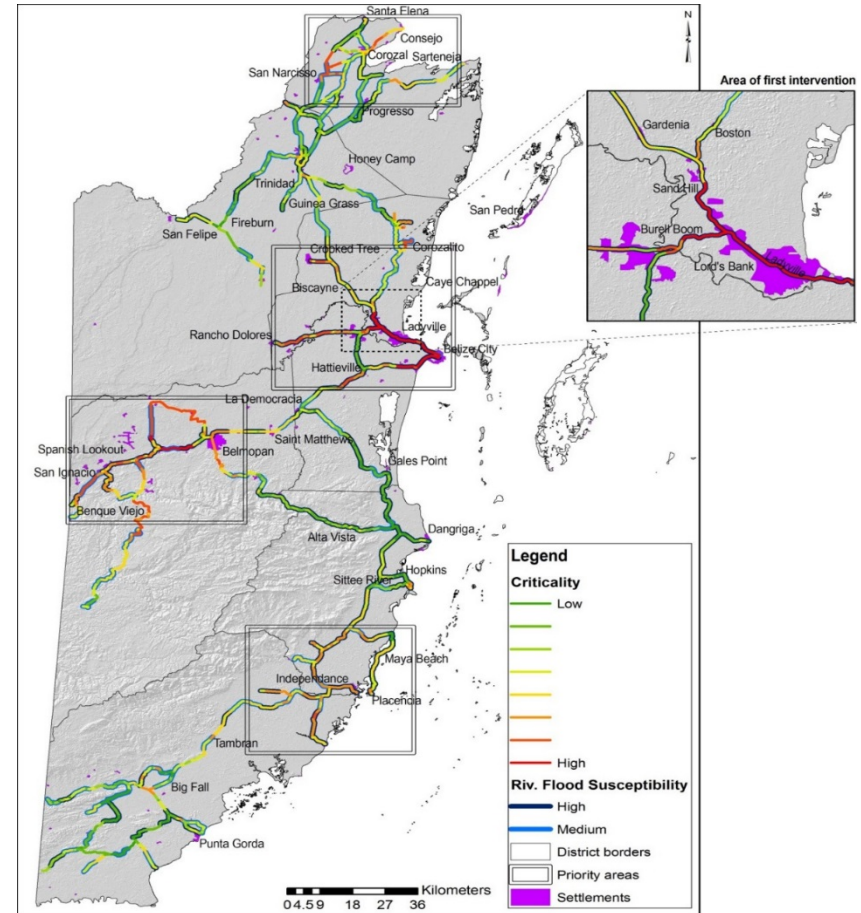
# Build resilience of the road sector and reducing fragmentation

(Belize)



## Priority areas for flood vulnerability reduction investments

- Leveraged additional investment:
- Developed roads conditions database
- Increased awareness of disasters and climate change impacts:
- Increased collaboration





# A knowledge base on 'what works' in island contexts

**SISRI Knowledge Notes**  
*A series highlighting good practices in climate and disaster resilience in Small Island States*

**The Small Island States Resilience Initiative (SISRI)**

NOTE: #1  
FOCUS: PROGRAM OVERVIEW

**OVERVIEW**

Small Island States include two-thirds of the countries that face the highest relative losses due to natural disasters, and these losses are increasing. The Small Island States supported through this global program will build their resilience through support to build their established procedures, offering innovative specifically targeted island States.

**SISRI Knowledge Notes**  
*A series highlighting good practices in climate and disaster resilience in Small Island States*

**Managing Population Retreat from At-Risk Areas**

NOTE: #3  
FOCUS: RISK REDUCTION

**OVERVIEW**

Relocating populations away from at-risk areas is a challenging process. But increasingly, however, in Small Island States where communities face dire threats to life and property due to factors such as sea level rise, coastal erosion and flood risk. A participatory process of population retreat can ensure and enhance the livelihoods of community members. Take time and thought and consider other valuable lessons on how to manage such a process. In both countries, empowering communities to identify the correct targets, and find options for each relocation, helped in rebuilding community support from the start. Planning for households and services in the national community helped build willingness to relocate. In addition, ensuring access to the coast was important, to ensure that communities could relocate to higher land without losing established livelihoods and cultural practices that might depend on the sea. Lastly, support needed to be taken to provide people from working back in the hazardous areas, for example by turning them into non-communal agriculture or other off-farm activities or other permanent businesses. This flow supports the slow migration, while recognizing that these practices are still emerging and will need to be adjusted for cases of long distance population relocation resulting from sea level rise.

**SISRI Knowledge Notes**  
*A series highlighting good practices in climate and disaster resilience in Small Island States*

**Building Resilience through Social Protection**

NOTE: #2  
FOCUS: SOCIAL PROTECTION

**OVERVIEW**

Many Small Island States have basic elements of Social Protection systems in place, which can be deployed to support disaster preparedness and response. These include social safety nets and labor market programs, social insurance to help mitigate agreed steps in meeting social services to address the needs of affected populations, and service delivery mechanisms that can be used to support affected households. These basic system elements provide a foundation on which a well-functioning and responsive Social Protection system can be further developed. Social Protection's contribution to climate and disaster resilience is increasingly being recognized in Small Island States. Countries such as Jamaica have started up Social Protection programs to respond to natural hazards, while others, such as Comoros have taken steps to adapt and scale up programs to build resilience. Small Island States can work towards adaptive and responsive Social Protection systems as a key level of maturity and adaptation. By aligning Social Protection provision with resilience objectives, countries could more effectively help vulnerable households adapt to climate change, prepare for disasters, and restore livelihoods quickly should a disaster strike.

**SISRI** **GFDRR** **WORLD BANK GROUP**

## Published Knowledge Notes:

1. Policy and institutional issues (SISRI overview)
2. Managed population retreat from at-risk areas
3. Resilience through social protection

## Under preparation:

- Financial protection
- Resilient infrastructure
- Coastal protection toolkit
- Addressing project management bottlenecks

# In Summary...

## 1. *We are building:*

- A specialized global SISRI team to support on core Building Blocks
- A Practitioners Network for sharing knowledge
- Working towards measuring Enhanced Resilience



## 2. Testing Innovative financial instruments and approaches to reduce fragmentation and increase effective implementation

**For further information,  
please contact the SISRI Co-Leads:**

Sofia Bettencourt  
[sbettencourt@worldbank.org](mailto:sbettencourt@worldbank.org)

Habiba Gitay  
[hgitay@worldbank.org](mailto:hgitay@worldbank.org)

**And visit us at**  
<https://www.gfdrr.org/small-island-states-resilience-initiative>